



Warsaw, 13 August 2025

DOOŚ-WST.442.7.2025.ZM.2

As per distribution list

Information on the planned construction of four offshore wind farms located in areas 14.E.1, 14.E.2, 14.E.3, 14.E.4, in the Exclusive Economic Zone of Poland in the Baltic Sea

Dear Sirs

I kindly inform you that the Republic of Poland is conducting an environmental impact assessment for the construction of four offshore wind farms located in areas 14.E.1, 14.E.2, 14.E.3, 14.E.4, in the Polish Exclusive Economic Zone (EEZ) in the Baltic Sea.

Due to the lack of identified significant negative transboundary impacts on the territory of Estonia, Finland, Lithuania and Latvia, information on the above-mentioned projects is provided to you by the Polish Party for information solely for information purposes, while maintaining the transparency of the environmental impact assessment procedure.

Please find attached the following documentation:

1. applications for environmental decisions (4 documents) in Polish and English;
2. Project Information Sheet (4 documents) in Polish and English.

The above-mentioned applications for environmental decisions and Project Information Sheets (KIP) are available for download at the following address until 31 October 2025:

[Polish Offshore Windfarms](#)

Information on the projects

The above-mentioned projects involve the construction, operation and decommissioning of offshore wind farms. The OWFs will be located in the western part of the Polish EEZ in the immediate vicinity of the Danish EEZ (area 14.E.3), approximately 14 km from the German EEZ (the nearest area 14.E.2) and 113.5 km from the Swedish EEZ (the nearest area 14.E.3). Due to the location of the planned projects and potential transboundary impacts, in particular cumulative impacts, the documentation for all four OWFs is being submitted together. The location of the planned OWFs 14.E.1, 14.E.2, 14.E.3 and 14.E.4 is shown in *Figure 1*.

OWF 14.E.1

The area of OFW 14.E.1, within which the turbines and accompanying infrastructure will be installed, is 82.44 km². The maximum installed capacity will be 812 MW. The maximum number of turbines will be 54.

OWF 14.E.2

The area of OFW 14.E.2, within which the turbines and accompanying infrastructure will be installed, is 91.8 km². The maximum installed capacity will be 896 MW. The maximum number of turbines will be 59.

OWF 14.E.3

The area of OFW 14.E.3, within which the turbines and accompanying infrastructure will be installed, is 125.89 km². The maximum installed capacity will be 1204 MW. The maximum number of turbines is 80.

OWF 14.E.4

The area of MFW 14.E.4, within which the turbines and accompanying infrastructure will be installed, is 147.69 km². The maximum installed capacity will be 1204 MW. The maximum number of turbines is 80.

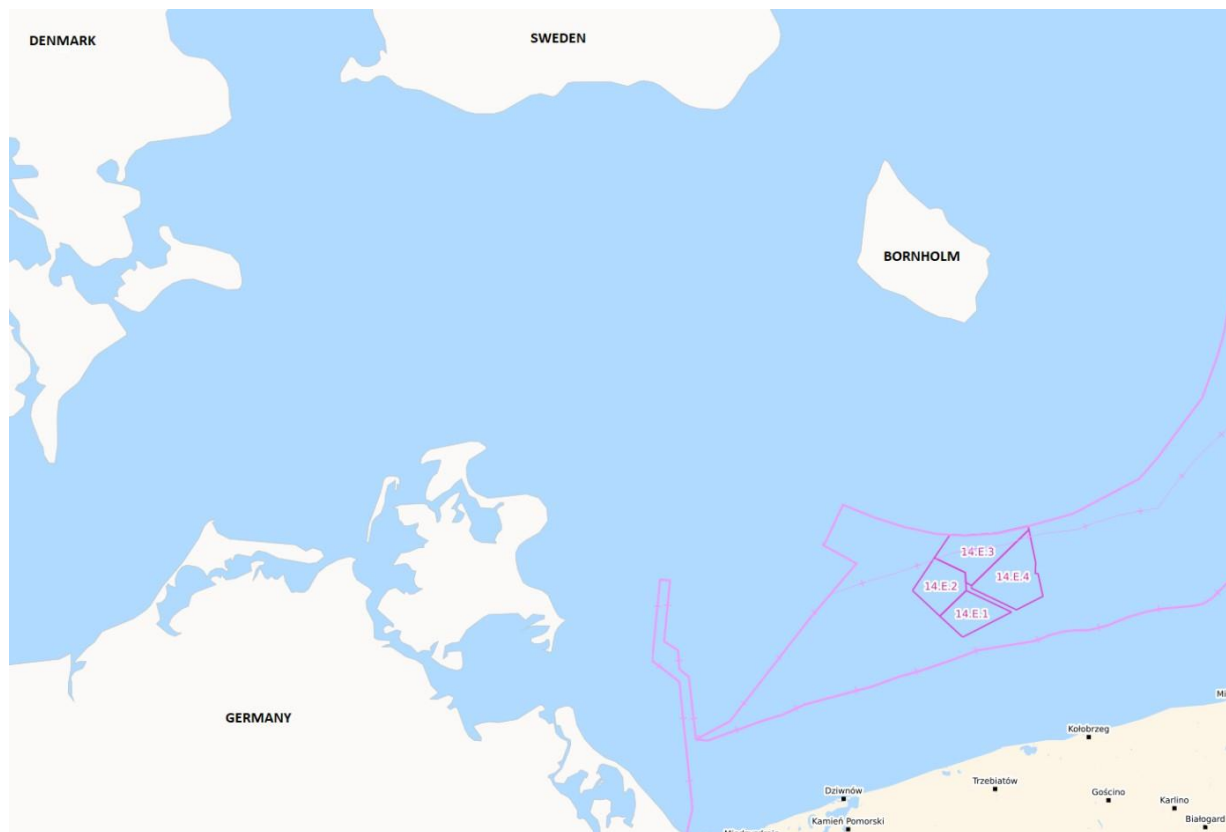


Figure 1 Location of OWF 14.E.1, 14.E.2, 14.E.3, 14.E.4 in the Polish Exclusive Economic Zone (source: www.sipam.gov.pl)

Transboundary environmental impact

Due to the location of the project in close proximity to the borders of Denmark, Sweden and Germany, transboundary environmental impacts cannot be excluded in connection with its construction, operation and decommissioning. The preliminary identified potential transboundary impacts concern the impact on birds and bats as well as marine mammals and fish. The source of impacts in this type of project may be, for example, underwater noise generated during the installation of wind turbine foundations and power stations in relation to marine mammals and fish, including cumulative impacts with other planned and existing offshore wind farms. A wind farm with structures rising more than 350 m above sea level may constitute a permanent migration barrier for birds and bats.

Description of the environmental impact assessment procedure

In accordance with Polish regulations, an environmental impact assessment is carried out separately for each of the four OWFs. The environmental impact assessment procedure ends with the issuance of a decision on environmental conditions. At the current stage of the environmental impact assessment, the authority conducting the proceedings, i.e. the Regional Director for Environmental Protection in Szczecin, is making determinations related to the scope of the report on the environmental impact of the project (scoping).

Timeframe for reply

We kindly ask to immediately confirm receipt of this letter together with attachments. However, if in your opinion there are grounds for believing that there may be a significant negative impact on the territory of your country, please send us this information **within 30 days of receiving this letter**, together with justification and position on the scope of the environmental impact report.

Please send your response to the above address:

Point of Contact for the Espoo Convention

Dorota Toryfter-Szumańska

e-mail: dorota.toryfter-szumanska@gdos.gov.pl

cc: zuzanna.majewska@gdos.gov.pl ; sekretariat.doos@gdos.gov.pl

Yours sincerely,

DOROTA TORYFTER-SZUMAŃSKA
Deputy Director
Impact Assessment Department
Environment
/ – digitally signed/

Distribution list:

ESTONIA

Birgit PARMAS

Ministry of Climate

E-mail: espoo@kliimaministeerium.ee

FINLAND

Finnish Environment Institute (SYKE)

E-mail: transboundaryEIA.SEA@syke.fi; kirjaamo@syke.fi

LITHUANIA

Vitalijus AUGLYS

Head of the Pollution Prevention Policy Group

Ministry of Environment

E-mail: vitalijus.auglys@am.lt

Beata VILIMAITE SILOBRITIENE

Senior Adviser of Pollution Prevention Policy Group

Ministry of Environment

Email: beata.vilimaite@am.lt

LATVIA

Energy and Environment Agency

Email: pasts@eva.gov.lv

For the attention of:

1. Regional Director for Environmental Protection in Szczecin
2. Energa MFW 1 sp. z o.o.;
3. Energa MFW 2 sp. z o.o.;
4. ORLEN Neptun III sp. z o.o.
5. ORLEN Neptun IV Ltd.